



Control relay expansion relay output



Powering Business Worldwide™

Part no. EASY618-DC-RE
Article no. 232112

Delivery programme

Product range			Control relays easyRelay Multi-function-display MFD-Titan
Subrange			I/O expansions digital
Basic function			Expansions
Description			Can be used through easyLink
Product range			Remote I/O systems Compact PLCs
Function			Expansions EASY...
Accessories			I/O expansions digital
Inputs			
Inputs expansion (number)			digital: 12
Outputs			
Type			Relay
Supply voltage			24 V DC
For use with			easy700 easy800 EC4P MFD-CP8...

Approbationen

UL approval	Yes
CSA approval	Yes
Product Standards	IEC/EN see Technical Data; UL 508; CSA C22.2 No. 142-M1987; CSA C22.2 No. 213-M1987; CE marking
UL File No.	E135462
UL CCN	NRAQ, NRAQ7
CSA File No.	012528
CSA Class No.	2252-01
NA Certification	UL listed, CSA certified
Degree of Protection	IEC: IP20, UL/CSA Type: -

General

Dimensions (W x H x D)	mm	107.5 x 90 x 58 (6 PE)
Weight	kg	0.3

Climatic environmental conditions

Storage	°C	-40 - +70
---------	----	-----------

Electromagnetic compatibility (EMC)

Overvoltage category/pollution degree		II/2
Electrostatic discharge (ESD)		
applied standard		IEC EN 61000-4-2, Level 3
Burst		according to IEC/EN 61000-4-4
power pulses (Surge)		2 kV (supply cables, symmetrical, EASY...AC) 0.5 kV (supply cables, symmetrical, easy-DC) according to IEC/EN 61000-4-5

Power supply

Rated operational voltage	U_e	V	24 DC (-15/+20%)
Permissible range			20.4 - 28.8 V DC
Residual ripple		%	≤ 5
Input current			140 mA at U_e
Voltage dips		ms	≤ 10
Heat dissipation			3.4 W
Heat dissipation			3.4 W

Digital inputs 24 V DC

Number			12
Status Display			LCD-Display
Potential isolation			from the outputs: yes

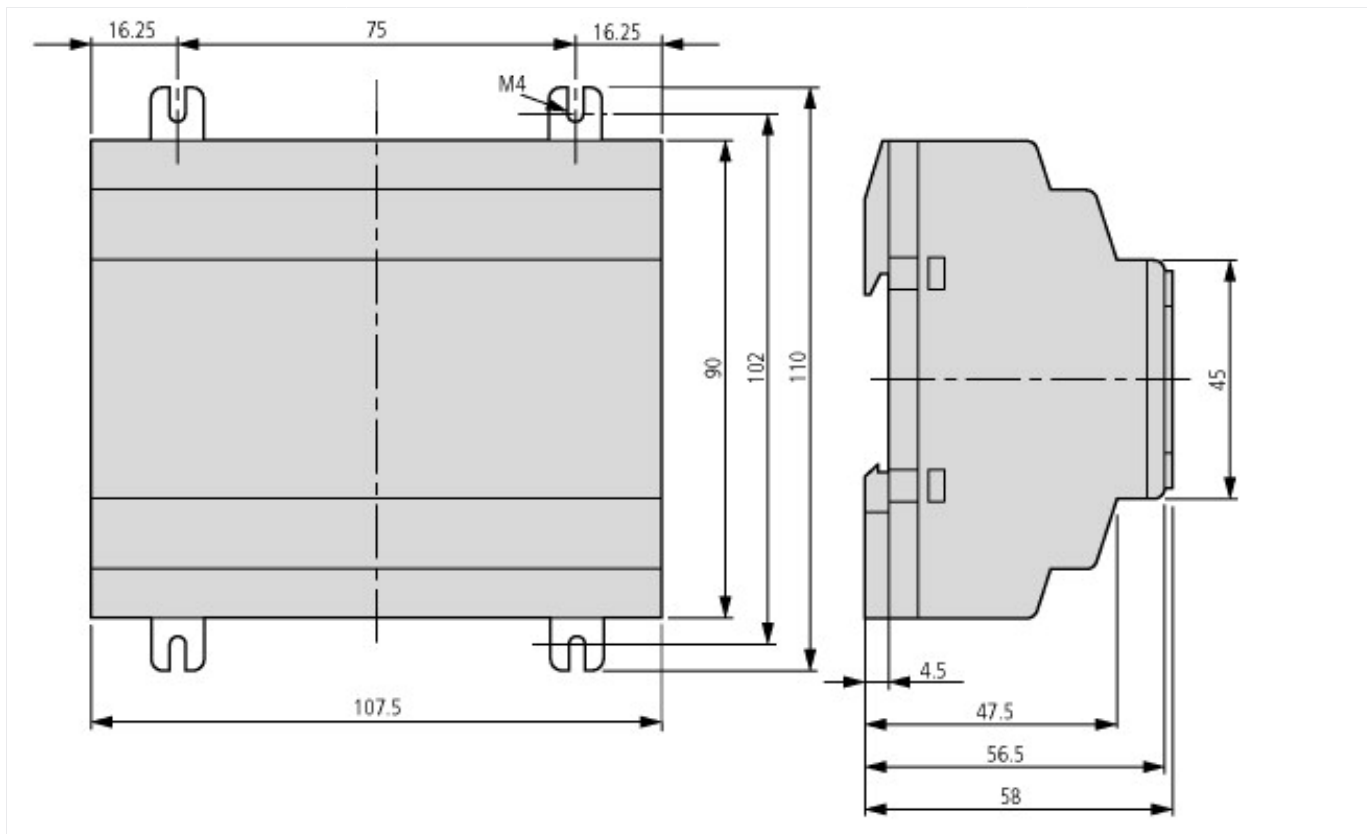
Rated operational voltage	U _e	V DC	24
Input voltage		V DC	< 5 (I1 - I12, R1 - R12) at signal "0"
Input current on 1 signal			
Input current at signal 1		mA	3.3 (R1 to R6 (R12))
Deceleration time		ms	20 (from "0" to "1", debounce ON) Normally 0.25 (R1 - R12) (from "0" to "1", debounce OFF) 20 (from "1" to "0", debounce ON)
Cable length		m	100 (unshielded)

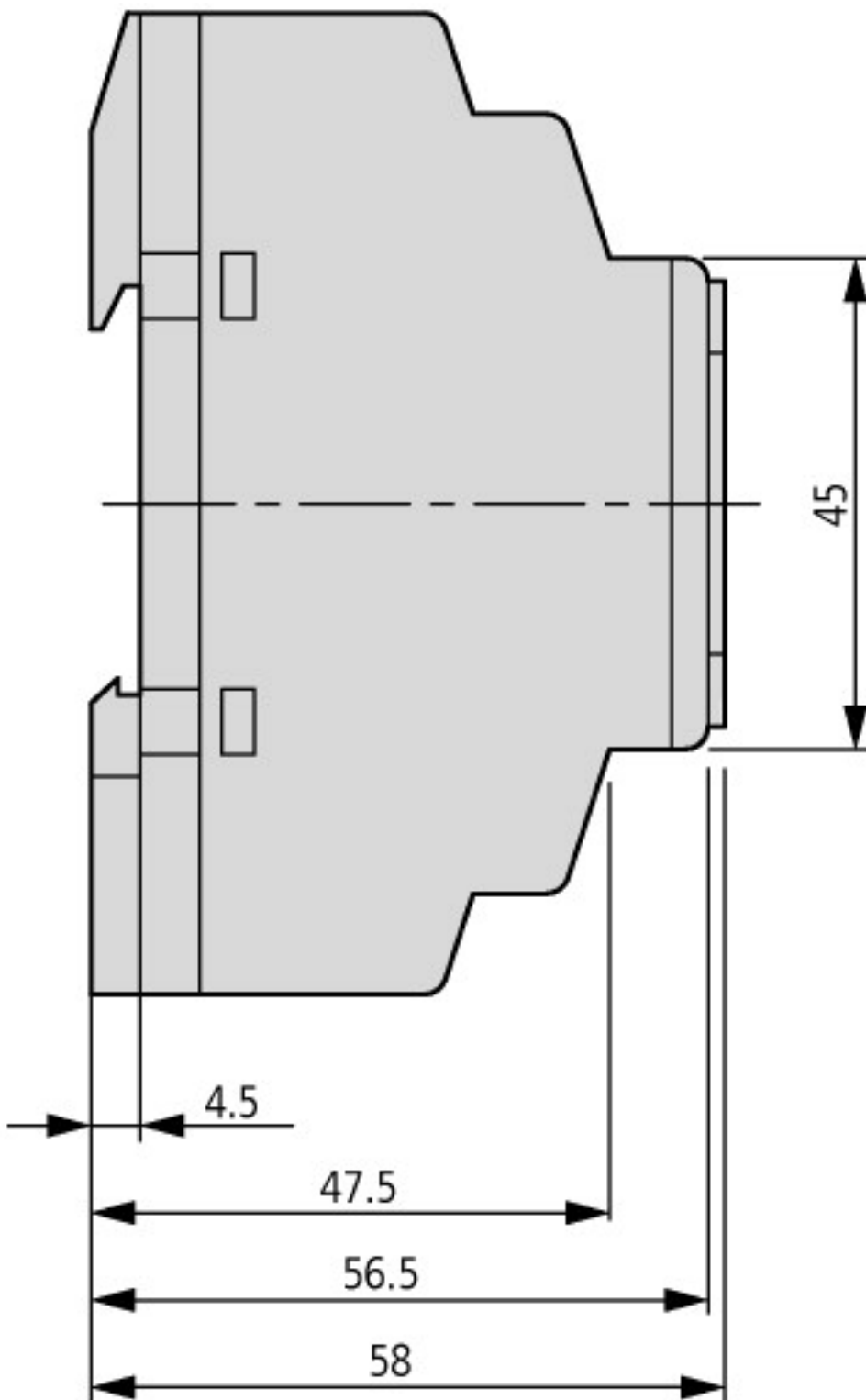
Relay outputs

Number			6
Outputs in groups of			1
Parallel switching of outputs for increased output			Not permissible
Protection of an output relay			Miniature circuit-breaker B16 or fuse 8 A (slow)
Lifespan, mechanical	Operations	x 10 ⁶	10
Contacts			
Conventional thermal current (10 A UL)		A	8
Recommended for load: 12 V AC/DC		mA	> 500
Short-circuit-proof cos φ = 1, characteristic B16 at 600 A		A	16
Short-circuit-proof cos φ = 0.5 to 0.7, characteristic B16 at 900 A		A	16
Rated impulse withstand voltage U _{imp} of contact coil		kV	6
Rated operational voltage	U _e	V AC	250
Rated insulation voltage	U _i	V AC	250
Safe isolation according to EN 50178		V AC	300 between coil and contact 300 between two contacts
Breaking capacity			
AC-15, 250 V AC, 3 A (600 Ops./h)	Operations		300000
DC-13, L/R \leq 150 ms, 24 V DC, 1 A (500 S/h)	Operations		200000
Filament bulb load			
1000 W at 230/240 V AC	Operations		25000
500 W at 115/120 V AC	Operations		25000
Fluorescent lamp load			
Fluorescent lamp load 10 x 58 W at 230/240 V AC			
With upstream electrical device	Operations		25000
Uncompensated	Operations		25000
Fluorescent lamp load 1 x 58 W at 230/240 V AC, conventional, compensated	Operations		25000
Switching frequency			
Mechanical operations		x 10 ⁶	10
Switching frequency		Hz	10
Resistive load/lamp load		Hz	2
Inductive load		Hz	0.5
UL/CSA			
Uninterrupted current at 240 V AC		A	10
Uninterrupted current at 24 V DC		A	8
AC			
Control Circuit Rating Codes (utilization category)			B 300 Light Pilot Duty
Max. rated operational voltage		V AC	300
max. thermal continuous current cos φ = 1 at B 300		A	5
max. make/break cos φ ≠ capacity 1 at B 300		VA	3600/360
DC			
Control Circuit Rating Codes (utilization category)			R 300 Light Pilot Duty

Max. rated operational voltage	V DC	300
Max. thermal uninterrupted current at R 300	A	1
Max. make/break capacity at R 300	VA	28/28

Dimensions





6

Additional product information (links)

IL05003003Z (AWA2724-2334) easyControl: Compact controller

IL05003003Z (AWA2724-2334)
easyControl: Compact controller

ftp://ftp.moeller.net/DOCUMENTATION/AWA_INSTRUCTIONS/IL05003003Z2010_11.pdf

IL05013006Z (AWA2528-1837) Control relay easy

IL05013006Z (AWA2528-1837) Control
relay easy

ftp://ftp.moeller.net/DOCUMENTATION/AWA_INSTRUCTIONS/IL05013006Z2010_11.pdf

IL05013012Z (AWA2528-1979) Control relay easy

IL05013012Z (AWA2528-1979) Control
relay easy

ftp://ftp.moeller.net/DOCUMENTATION/AWA_INSTRUCTIONS/IL05013012Z2010_11.pdf

IL05013014Z (AWA2528-2019) Multi function display, Control relay easy

IL05013014Z (AWA2528-2019) Multi
function display, Control relay easy

ftp://ftp.moeller.net/DOCUMENTATION/AWA_INSTRUCTIONS/IL05013014Z2010_11.pdf

MN04902001Z-EN (AWB2528-1423) easy800 Control Relay

MN04902001Z-DE (AWB2528-1423) Steuerrelais easy800 - Deutsch	ftp://ftp.moeller.net/DOCUMENTATION/AWB_MANUALS/MN04902001Z_DE.pdf
MN04902001Z-EN (AWB2528-1423) easy800 Control Relay - English	ftp://ftp.moeller.net/DOCUMENTATION/AWB_MANUALS/MN04902001Z_EN.pdf